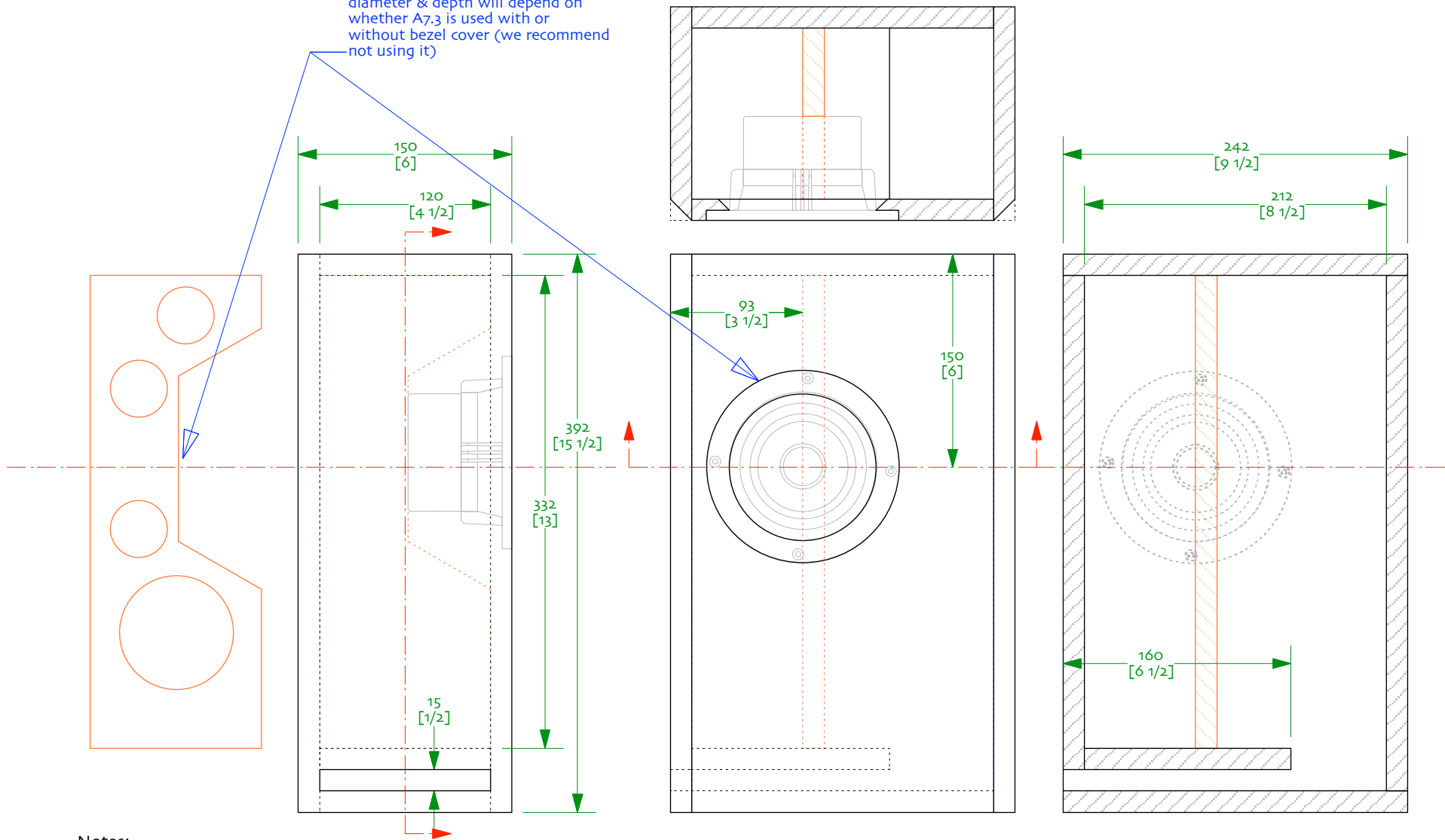


holey brace cut-out, driver rebate diameter & depth will depend on whether A7.3 is used with or without bezel cover (we recommend not using it)



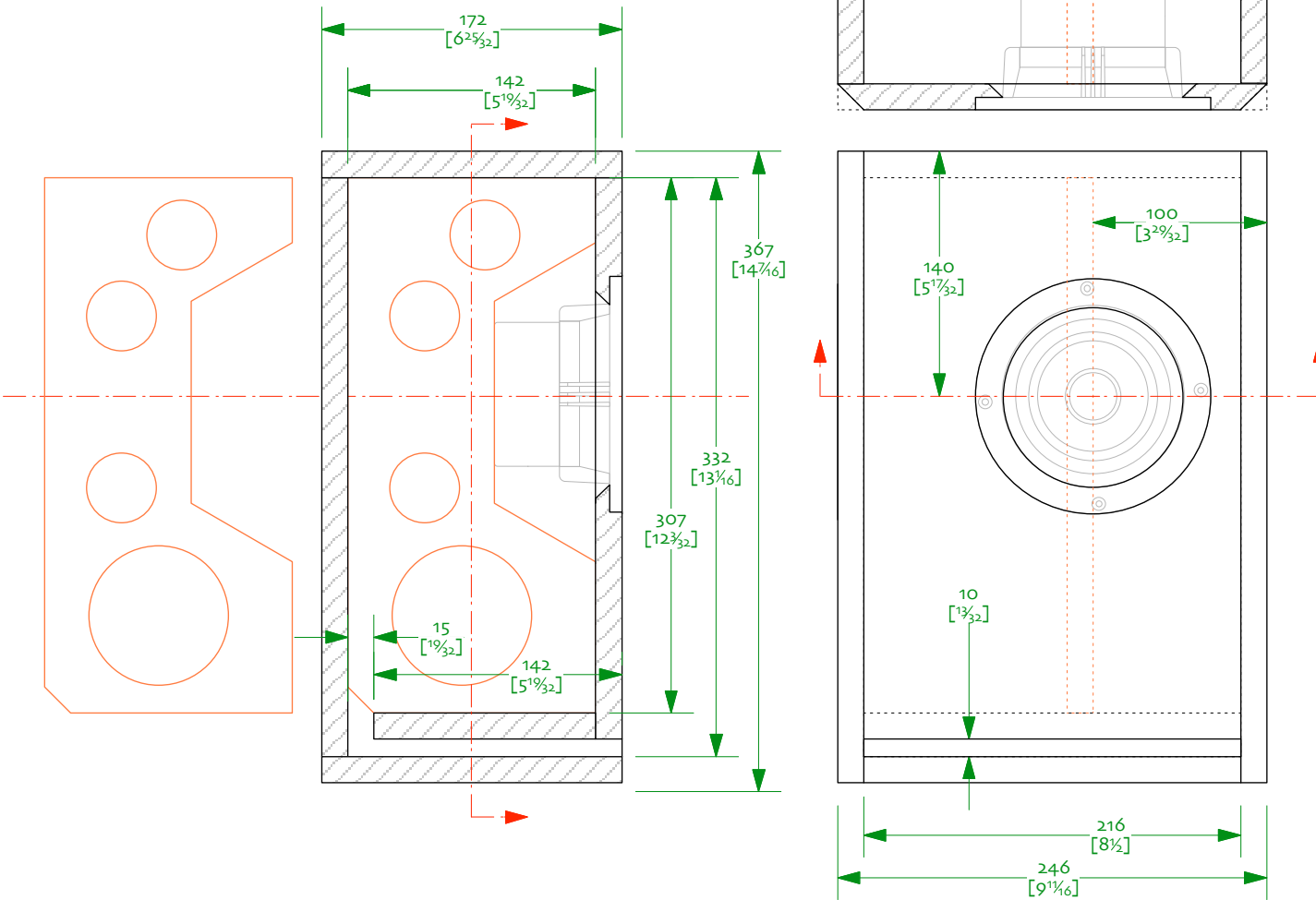
Notes:

- 0/ A wideside Classic Golden Ratio based derivative of the dMar-Ken7.3 designed for Mark Audio Alpair 7.3
- 1/ All panels 15mm
- 2/ brace shape is only suggestive except for the detail near the vent shelf (at the bottom) -- prime purpose is to brace driver, it needs to be about 35-40% holes. (ie if you have to mount a terminal cup in the middle, you'll want to make sure the brace allows clearance), It is intentionally just off centre.
- 3/ Don't forget to angle cut the back of the driver cut-out to give it breathing room
- 4/ All internal panels lined with ~1/2" (12mm) wool felt (preferred), 3/4" (19mm) poly-fluff batting, or 1" (25mm) fiberglass Note that it is hard to get into the box after it is sealed up
- 5/ make mirror image pairs



Wide Classic GR dMar-Ken7.3 2v01
 sheet cgrdMK73-15w | plan (15mm)
 19-february-2016 designed & drawn by dld
 © 2011-2016 planet_10 enterprises limited
 free for non-commercial use only

Soren Edition CGR dMar-Ken7.3 2v1
15mm / Mark Audio Alpair 7.3
© 2011 planet_10 enterprises limited
29-october-2011 designed & drawn by did
free for non-commercial use only



Notes:

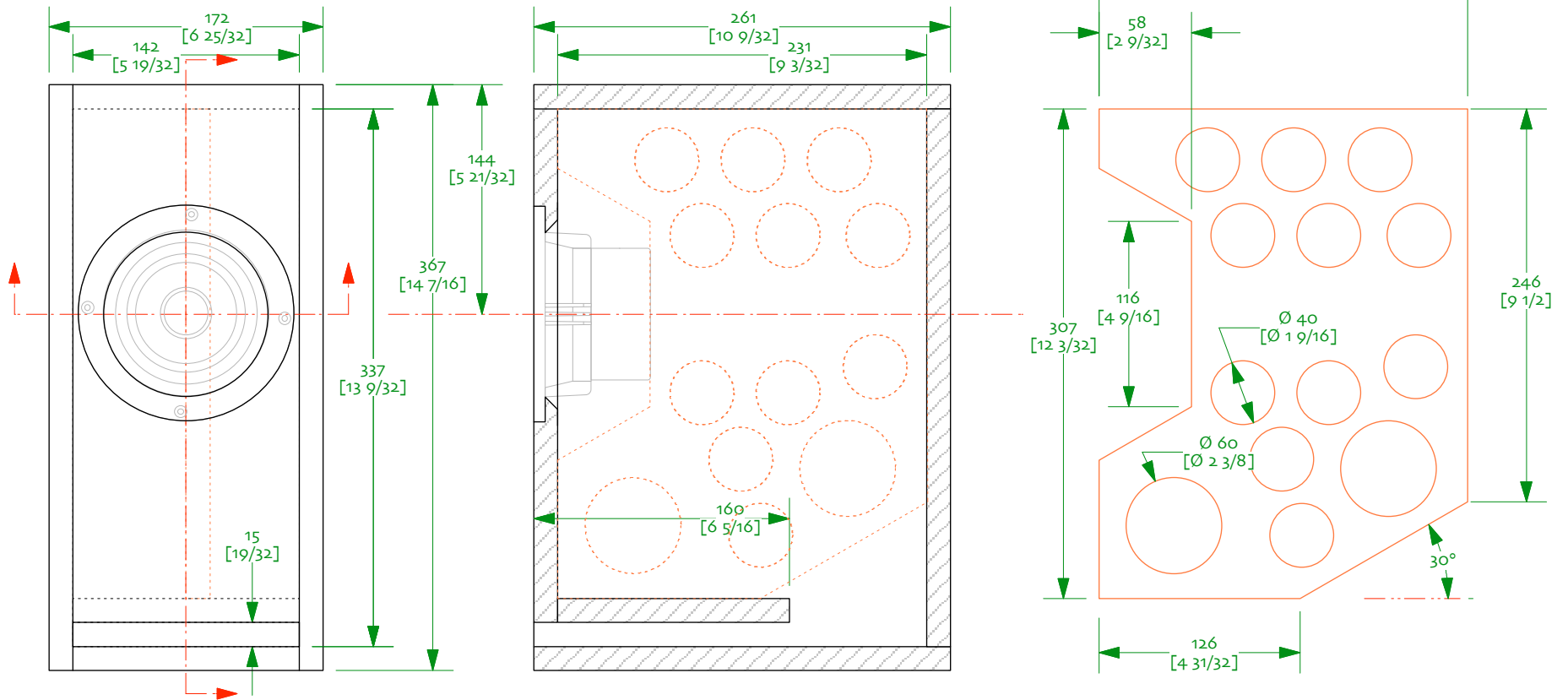
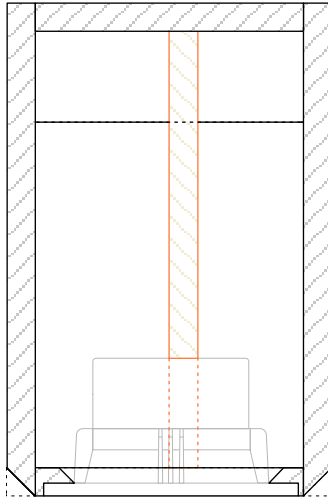
- 0/ A wideside Classic Golden Ratio based derivative of the dMar-Ken7.3 designed for modified Mark Audio Alpair 7.3, will work well with stock driver
- 1/ All panels 15mm
- 2/ brace shape is only suggestive -- prime purpose is to brace driver, it needs to be about 35-40% holes. (ie if you have to mount a terminal cup in the middle, you'll want to make sure the brace allows clearance), It is intentionally just off centre.
- 3/ Don't forget to angle cut the back of the driver cut-out to give it breathing room
- 4/ All internal panels lined with ~1/2" (12mm) wool felt (preferred), 3/4" (19mm) poly-fluff batting, or 1" (25mm) fiberglass Note that it is hard to get into the box after it is sealed up
- 5/ make mirror image pairs

Slim Classic GR dMar-Ken7.3 2vo3

sheet cgrdMK73-15s | plan (15mm)
 19-februar-2016 designed & drawn by dld
 © 2010-2016 planet_10 enterprises limited
 for non-commercial use only

Notes:

- o/ A Classic Golden Ratio based derivative of the dMar-Ken7.3 designed for Mark Audio Alpair7.3
- 1/ All panels 15mm
- 2/ brace shape is only suggestive -- prime purpose is to brace driver, it needs to be about 35-40% holes. (ie if you have to mount a terminal cup in the middle, you'll want to make sure the brace allows clearance), It is intentionally just off centre.
- 3/ Don't forget to angle cut the back of the driver cut-out to give it breathing room
- 4/ All internal panels lined with ~1/2" (12mm) wool felt (preferred), 1" (25mm) poly-fluff batting, or 3/4" (19mm) fiberglass Note that it is hard to get into the box after it is sealed up



Notes:

- o/ A Classic Golden Ratio based derivative of the dMar-Ken7.3 designed for Mark Audio Alpair7.3
- 1/ All panels 15mm
- 2/ brace shape is only suggestive -- prime purpose is to brace driver, it needs to be about 35-40% holes. (ie if you have to mount a terminal cup in the middle, you'll want to make sure the brace allows clearance), It is intentionally just off centre.
- 3/ Don't forget to angle cut the back of the driver cut-out to give it breathing room
- 4/ All internal panels lined with ~1/2" (12mm) wool felt (preferred), 1" (25mm) poly-fluff batting, or 3/4" (19mm) fiberglass Note that it is hard to get into the box after it is sealed up

